



Mars8004G-L100cm

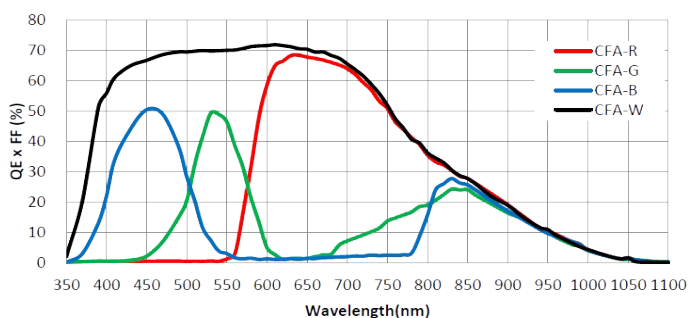
- 8K @100 KHz
- CameraLink supports Full, Medium, Base, and Deca, can provide up to 6.8Gbps theoretical bandwidth
- Compatible with Cameralink Protocol, GenICam Standard, and the third-party software based on these protocol and standard
- Support Windows



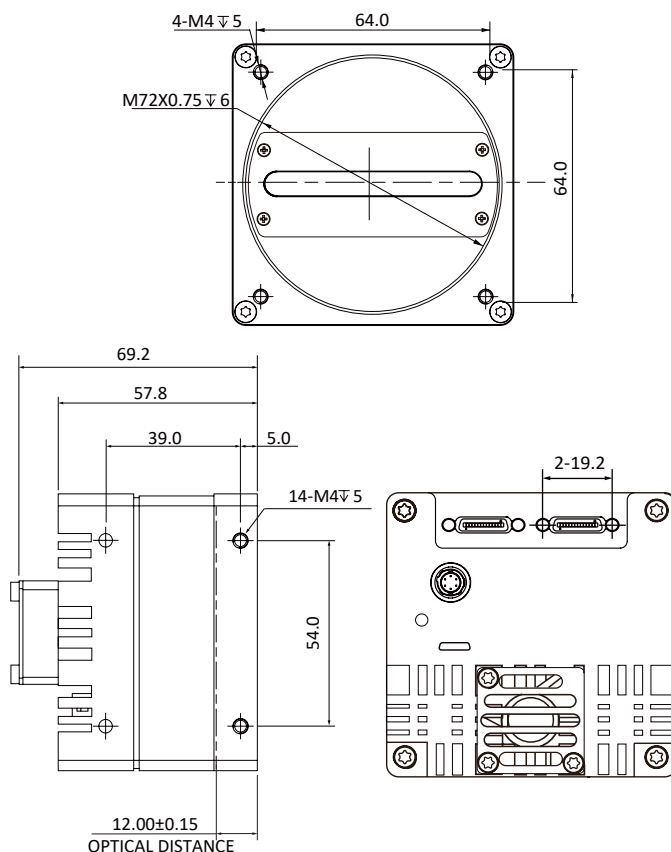
Applied range • Printing • Textile • Railway • Logistics • Metallurgy • Food • Pharmaceutical • Material sorting

Camera	Mars8004G-L100cm
Resolution [H*V]	8192 x 4
Sensor Type	CMOS
Pixel Size [μm]	5 × 5
Line Frequency [KHz]	100
Data Bit	10bit
Exposure Time	3 μs ~100ms
Dynamic Range	62dB
Mono/Color	Mono
Image Format	Mono8/10
Interface	CameraLink
Synchronization	Via hardware trigger、software trigger or free run mode
Pixel Clock Speed	34M/51M/68M/85M
Housing Size [l*w*h]	80.0 × 80.0 × 57.8 mm (520g)
Operating Temperature	-30~80 ° C (Storage), -30~50° C (Working)
Lenses Mount	M72*0.75, BFL 12 mm
Power Input	DC 24V
Power Consumption	11.5W
Driver	Mars Series Camera Software Suite (iCentral) or third-party CameraLink protocol software
Operating System	Windows
Conformity	CameraLink ,GenICam

Spectral Response



Dimensions



No.8, Xiyuan 9th Road West Lake District, Hangzhou 310030 China
 Tel: 86-571-86888309, 86-571-86888307
 Web: www.visiondatum.com Email: market@visiondatum.com

