



### Mars8001C-L80cm

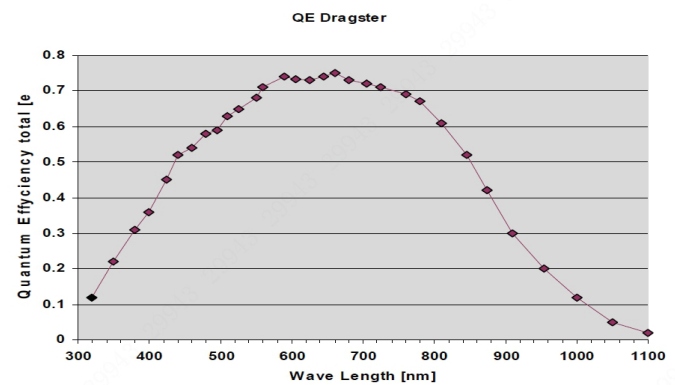
- 8K @74 KHz
- CameraLink supports Full, Medium, Base, and can provide up to 5.44Gbps theoretical bandwidth
- Compatible with Cameralink Protocol, GenICam Standard, and the third-party software based on these protocol and standard
- Support Windows
- 512 MB local memory for burst transmission and retransmission



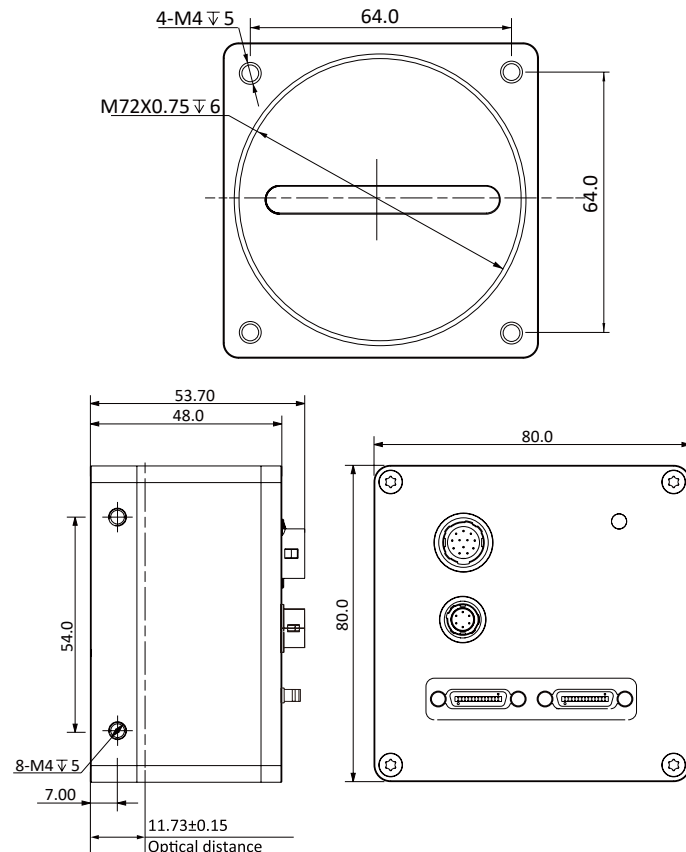
**Applied range** • Printing • Textile • Railway • Logistics • Metallurgy • Food • Pharmaceutical • Material sorting

Camera	Mars8001C-L80cm
Resolution [H*V]	8192 x 1
Sensor Type	CMOS
Pixel Size [ $\mu\text{m}$ ]	7 x 7
Line Frequency [KHz]	74
Data Bit	12bit
Exposure Time	8 $\mu\text{s}$ ~100ms
Dynamic Range	66dB
Mono/Color	Mono
Image Format	Mono8/10/10Packed/12/12Packed
Interface	CameraLink
Synchronization	Via hardware trigger、software trigger or free run mode
Pixel Clock Speed	32M/48M/68M/85M
Housing Size [l*w*h]	80.0 x 80.0 x 48.0 mm (390g)
Operating Temperature	-30~80 ° C (Storage), -30~50° C (Working)
Lenses Mount	M72*0.75, BFL 12 mm
Digital I/O	Differential/single-ended inputs x 2; Differential/single-ended outputs x 2; Differential/single-ended configurable input and output x 1; GPIO x 1
Power Input	DC 12-24V
Power Consumption	12V @ $\approx$ 6W
Driver	Mars Series Camera Software Suite (iCentral) or third-party CameraLink protocol software
Operating System	Windows
Conformity	CameraLink ,GenICam

### Spectral Response



### Dimensions



No.8, Xiyuan 9th Road West Lake District, Hangzhou 310030 China  
 Tel: 86-571-86888309, 86-571-86888307  
 Web: [www.visiondatum.com](http://www.visiondatum.com) Email: [market@visiondatum.com](mailto:market@visiondatum.com)

