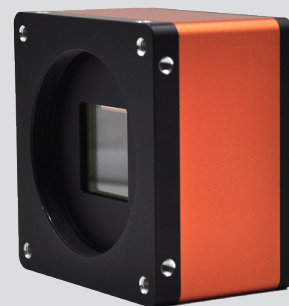




Mars150MS-5cm

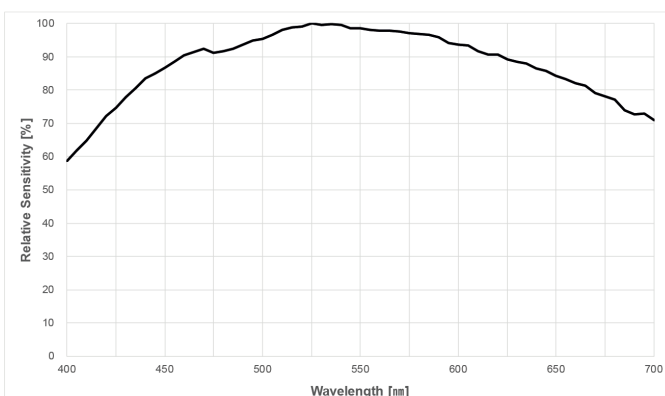
- 151MP @5.1(85M,10TAP)
- Compatible with Cameralink protocol and GenICam standard
- Support triggering via CameraLink frame grabber
- Support Windows operating platform
- Support DC 24V power supply



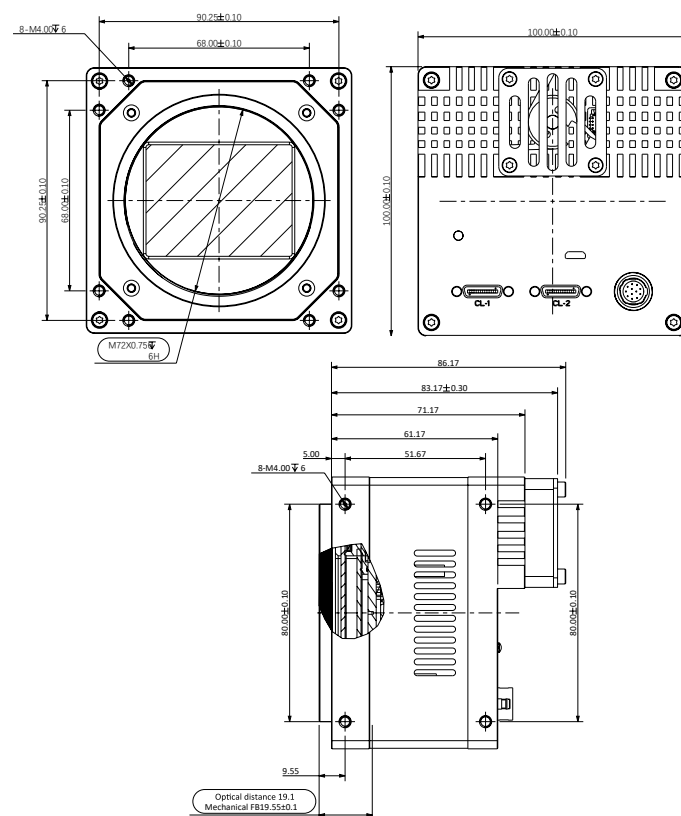
Applied range • Printing • Textile • Railway • Logistics • Metallurgy • Food • Pharmaceutical • Material sorting

Camera	Mars150MS-5cm
Resolution [H*V]	14160 x 10640
Sensor	Sony IMX411
Sensor Size	66.7mm(53.4mm x 40.0mm)
Pixel Size [μm]	3.76 x 3.76
Frame Rate [fps]	5.1
Data Bit	12bit
Exposure Time	3μS~15S
Dynamic Range	90dB
Mono/Color	Mono
Image Format	Mono8/10/12
Interface	Cameralink
Synchronization	Via hardware trigger、software trigger or free run mode
Programmable Control [ISP]	Image resolution、Exposure time、Gamma form、Image rollovers、Raw、LUT、Black level correction
Housing Size [l*w*h]	100.0 × 100.0 × 66.0 mm (890g)
Operating Temperature	-30~80 ° C (Storage), -30~50° C (Working)
Lenses Mount	M72*0.75(FBL 19.55)
Digital I/O	Cameralink, used for camera control and data transmission;
Power Input	DC 24V
Power Consumption	24V@18W
Driver	Mars Series Camera Software Suite (iCentral) or 3rd Party Cameralink Protocol Software
Operating System	Windows
Conformity	Cameralink, GenICam

Spectral Response



Dimensions



No.8, Xiyuan 9th Road West Lake District, Hangzhou 310030 China
 Tel: 86-571-86888309, 86-571-86888307
 Web: www.visiondatum.com Email: market@visiondatum.com

